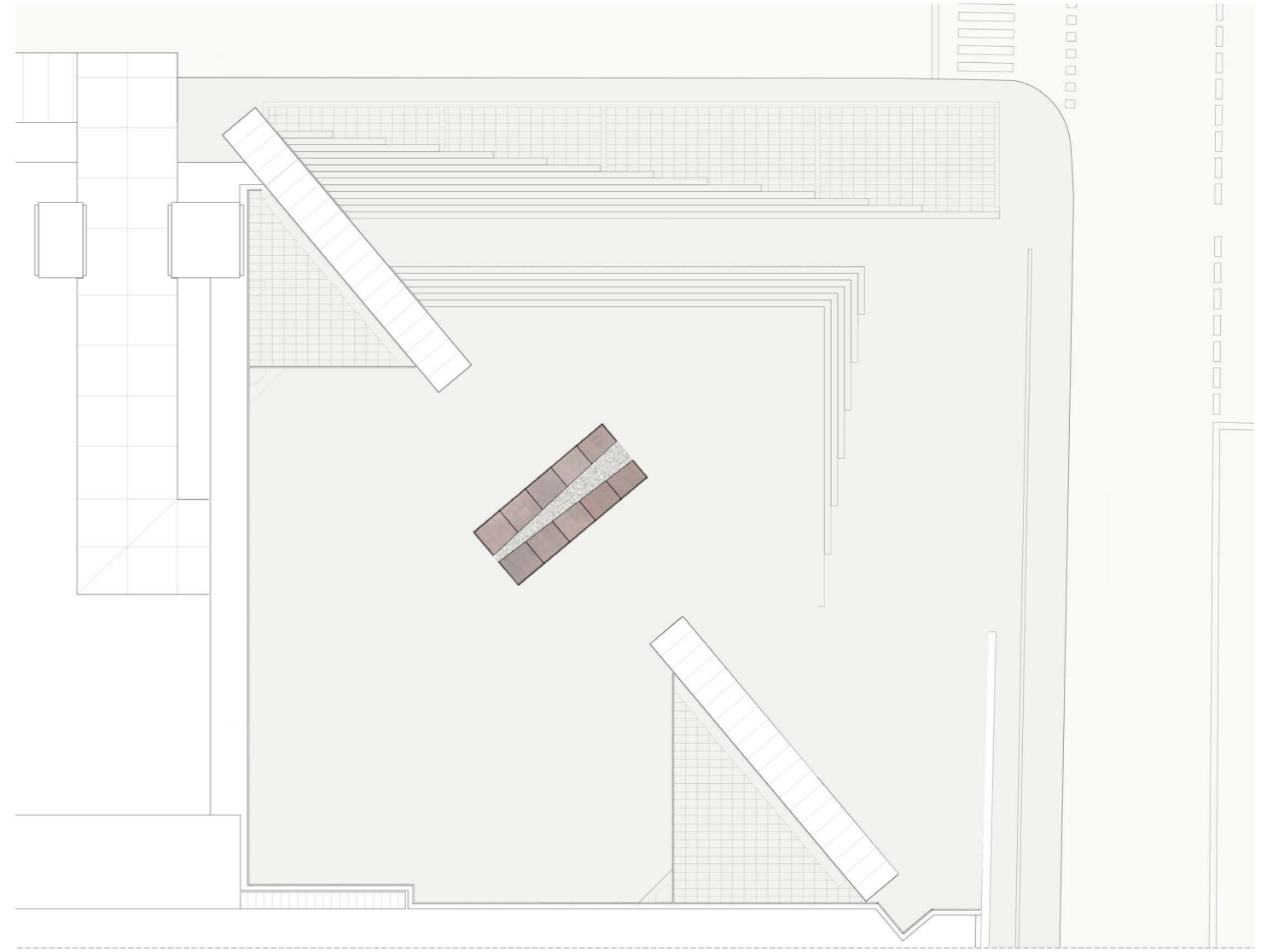
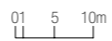
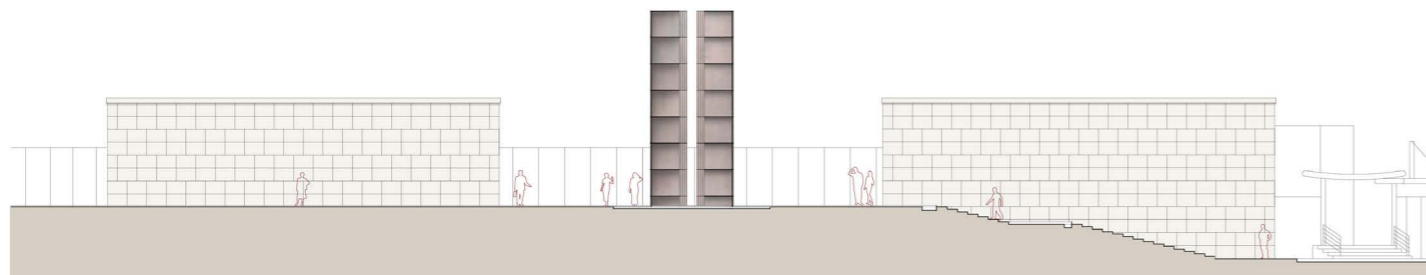
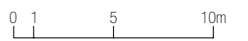




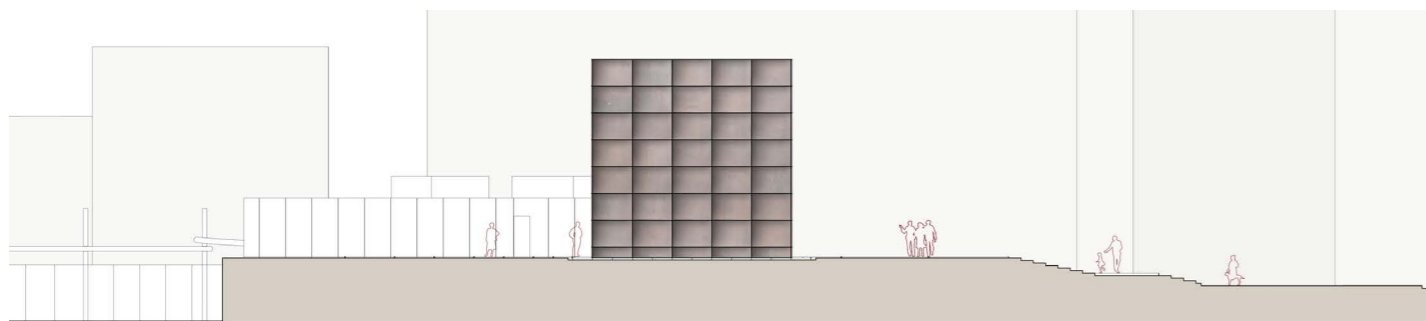
General plan



Site Plan



Section



Section



The Shoah was not the experience of a single person but of a community who suffered a common injustice.

The aim of the project is to give to Bologna a recognizable monument as a unique and a new reference for the historical center.

A landmark that will highlight the skyline of the city and allow people to evoke the memory of the past in the remembrance of those who have suffered horrible events.

This way, the structure of the wooden bunks in the concentration camps, where the bodies of prisoners were clumped together and their will to live was crushed by the feeling of the end, comes to life in an urban setting. It dramatically increases in size and projects into the space an infinite repetition of a module, appearing like a single cell of the dormitory.

Passers-by can experience the memorial by walking through the narrow and cold passage between the two equal and symmetrical elements. There, their thoughts become disoriented and merged with the memory of a mass extermination.

The memorial is placed on a new square, located near the high-speed train station, at the crossroad of via de' Carracci and via Matteotti. Being a massive structure, it distinguish itself from its urban environment, attracting attention of the passers-by.

It is made up of two parallelepiped blocks of 10x10 m. placed next to each other. Both elements in plan view have a trapezoidal shape with the two small sides 1,25 m and 1,70 m long respectively.

A passage of 1,60 meters between the blocks narrows to a size of 80 cm. This way, a visual unity of the project is ensured, that however does not exclude the multiplicity of its interiors. Emulating the structure of the wooden bunks, the intersection of the horizontal and vertical metal sheets allow a stable structure.



Before



After